

REFERENCE			
TYPE	WIDTH	HEIGHT	REFERENCE
DI	1.50M	2.10M	FULLY PANELLED DOOR
DD	0.90M	2.10M	FULLY PANELLED DOOR
WI	1.00M	1.20M	FULLY GLAZED WINDOW
VI	1.00M	0.40M	GLAZED CLERESTORY

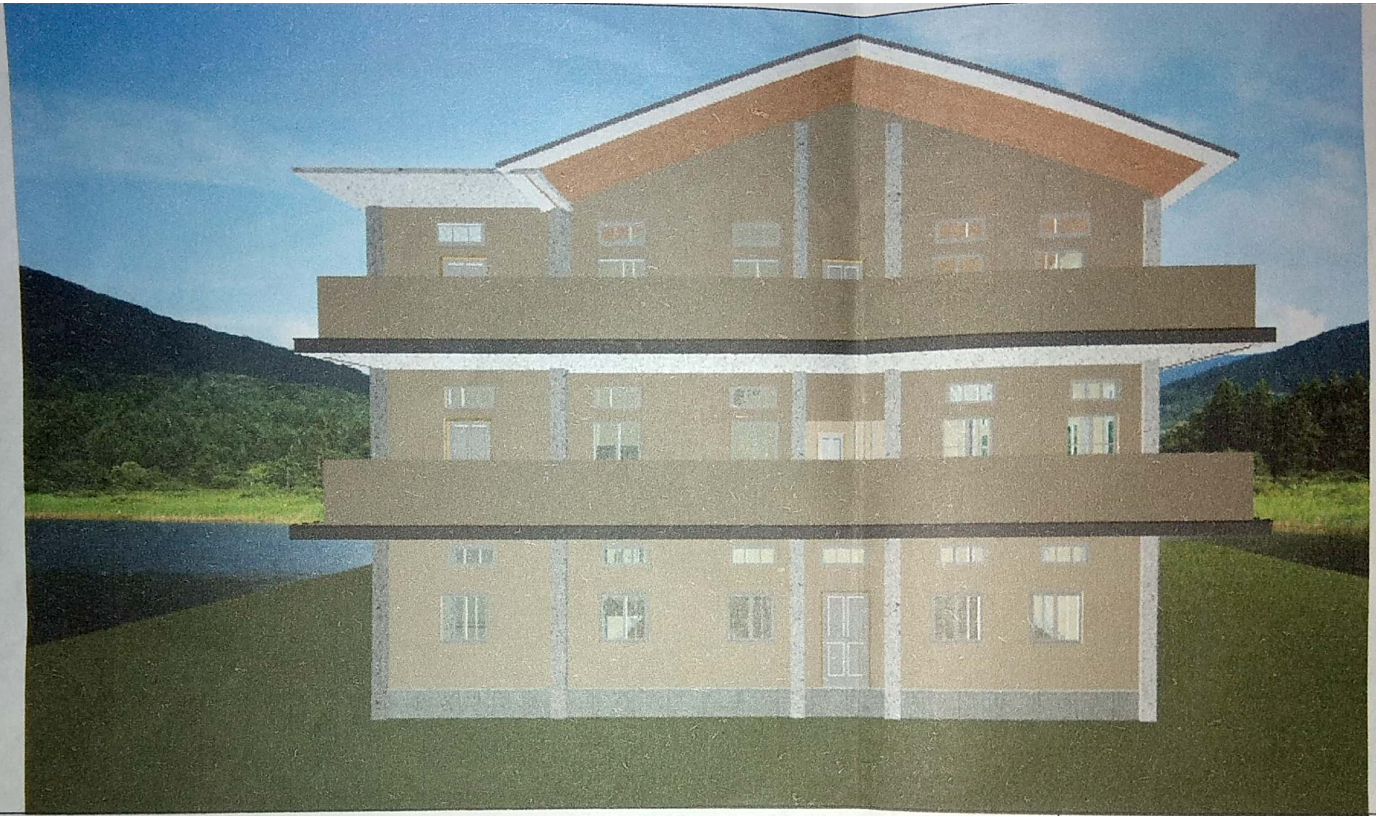
NAME OF WORK - PLAN OF EXISTING BLDG OF COLLEGE OF TEACHER EDUCATION, DHAKUAKHANA AND PROPOSED ASSAM TYPE MULTIPURPOSE HALL

DRAWN BY:

 Junior Engineer P. B. D.
 N.E. TELCO Sub-Division
 (Contract No. 3)

APPROVED BY:

 Executive Engineer, P.E.D.
 North Guwahati Sub-Division



FRONT ELEVATIO OF COLLEGE OF TEACHER EDUCATION AT DHAKUAKHANA, DIST:- LAKHIMPUR (ASSAM)
LOCATION:- BARUATIKA, WRD NO :-2 TO THE EAST OF KONWARGAON CHARIALI

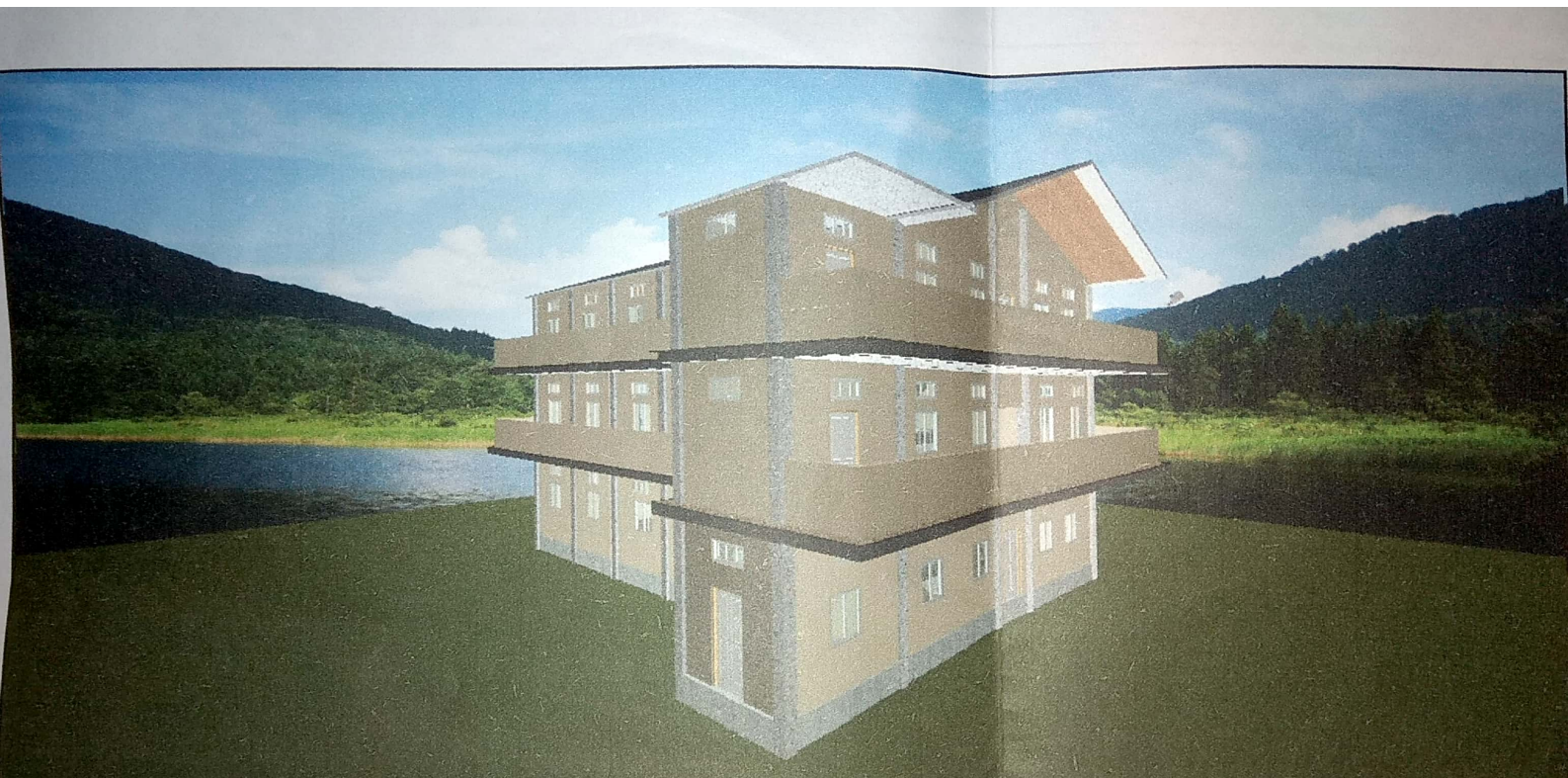
DRAWN BY:-

Countersigned
Pratham
28/2/19

Executive Engineer, PWD
North Lakhimpur Building Division

Approved By

[Signature]
28/2/19
Junior Engineer P.W.D
N.L. Bldg Sub-Division



ISOMETRIC VIEW OF COLLEGE OF TEACHER EDUCATION AT DHAKUAKHANA, DISTRICT LAKHIMPUR (ASSAM)
LOCATION:- BARUATIKA, WARD NO 2, TO THE EAST OF LONWARGAON CHARALI

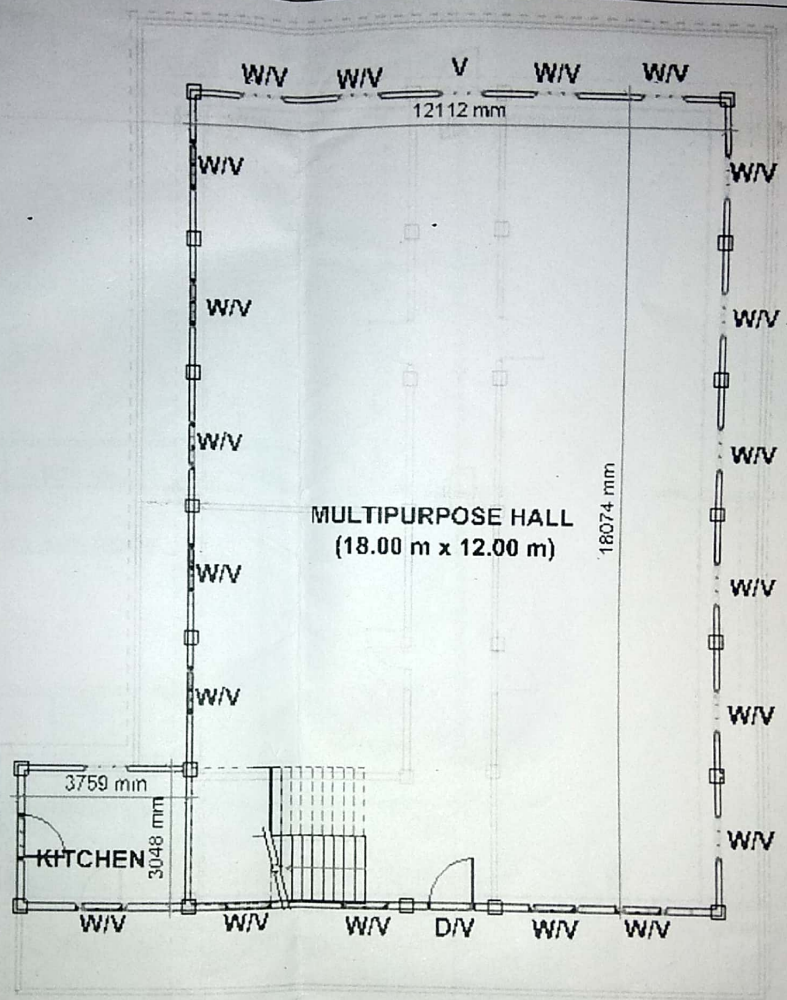
Counselling

Pratima
25/2/19

Executive Engineer, PWD
North Lakhimpur Building Division

DRAWN BY:- *dm*
25/2/17
Junior Engineer P.W.D.
N.L. Bldg-Sub-Division

Approved By

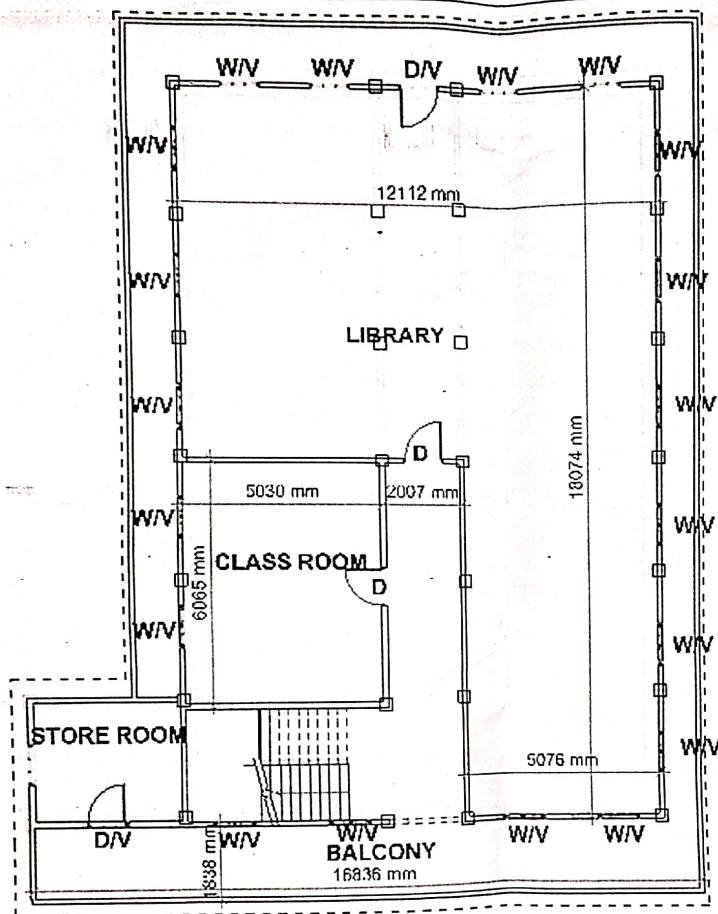


PLAN OF GROUND FLOOR OF COLLEGE OF TEACHER EDUCATION AT DHAKUAKHANA

DRAWN BY:- *28/2/19*
 Junior Engineer P.W.D.
 N.L. Bldg Sub-Division

Approved By

Countersigned
P. Swathina
28/2/19
 Executive Engineer, PWD
 North Lakhimpur Building Division

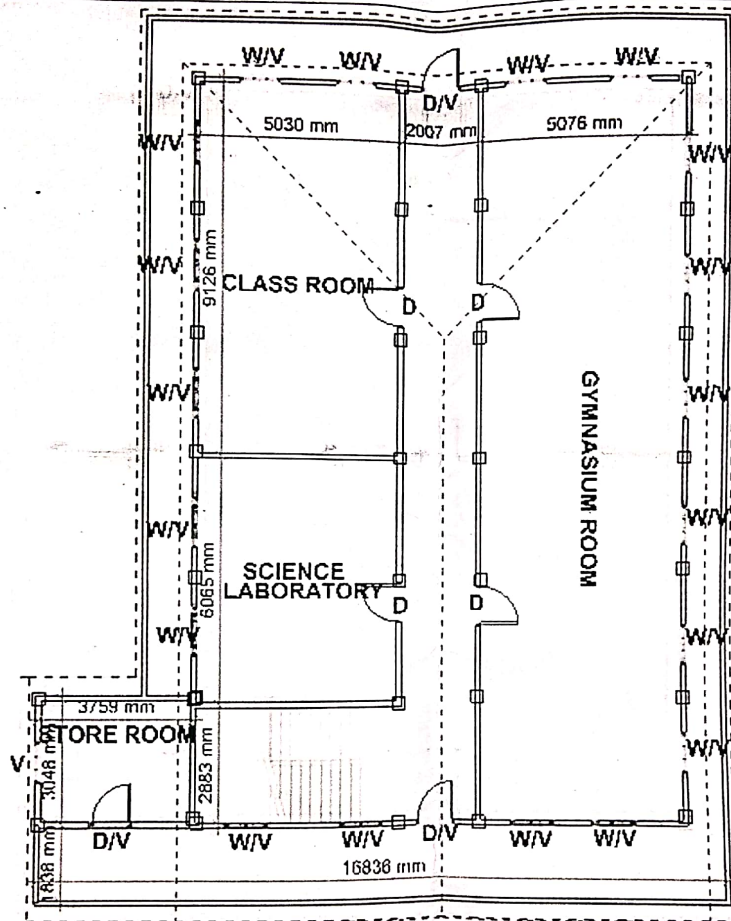


PLAN OF FIRST FLOOR OF COLLEGE FOR TEACHER EDUCATION AT DHAKUAKHANA

DRAWN BY:- *Jm 28/2/17*
 Junior Engineer P.W.D.
 N.L. Bldg. Sub-Division

Countersigned
P. M. M. M. M.
28/2/17
 Executive Engineer, P.W.D.
 North Laboratory Building Division

Approved By



PLAN OF SECOND FLOOR OF COLLEGE OF TEACHER EDUCATION AT DHAKUAKHANA

DRAWN BY:- *Jm* 28/2/19
 Junior Engineer P.W.D.
 North Lakhnau Building Division

Countersigned
 28/2/19
 Executive Engineer, P.W.D.
 North Lakhnau Building Division

Approved By